

HOWARD EISMAN

ARTIST AND CURATOR

2424 Avenue R, Brooklyn, NY 11229

718-521-6375

howardeisman@verizon.net

Gallery: www.archenamels.com Blog: howardeisman.wordpress.com

ARTIST STATEMENT

It is my intention to convey the message that we live in a vibrant, sensuous world swirling with color, joy, excitement and adventure.

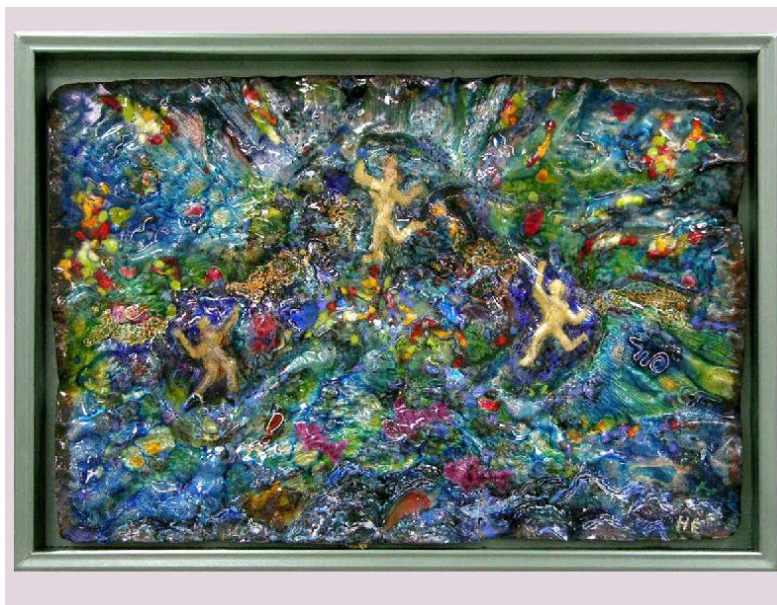
Howard Eisman, American, born in Brooklyn, NY, 1936

I began serious vitreous enameling in 1980. I gradually started exhibiting a couple of years later. Most of my exhibitions have been in the New York City area.

This list covers 2000 to the present: complete information is available upon request.

FEATURED and SOLO EXHIBITIONS

- 2014 **Eagle Dancer**, Figureworks Gallery, Brooklyn, NY
- 2010 **Sightings**, Howard Eisman Workshop, Brooklyn, NY
- 2006 **Arrows of Desire**, Figureworks Gallery, Brooklyn, N
- 2005 **Oeuvre d'Eisman**, Ward Nasse Gallery, New York, NY
- 2003 **A Muse of Fire**, Figureworks Gallery, Brooklyn, NY
- 2003 **Double Play**, Permanent Collection, W.W.Carpenter Foundation Museum, Bellevue, KY,



HOWARD EISMAN Continued

GROUP EXHIBITIONS

- 2015 **Renew**, Brooklyn Waterfront Artists Coalition, (Red Hook) Brooklyn, NY
International CKI Expo , Creativ-Kreis International, Florence and Milan, Italy
Without / Color Part 2 , Figureworks Gallery, Brooklyn, NY
Selected Works, Ward-Nasse Gallery, New York, NY
- 2014 **Show and Tell** , Blue Door Gallery, Yonkers NY
My Sister's Doll, Figureworks Gallery, Brooklyn, NY
International Biennial for Enamelists, Creativ- Kreis International, The Netherlands
Flushing Town Hall Members Exhibition, Flushing , NY
Selected Works, Ward-Nasse Gallery, New York, NY
Outer Limits, Brooklyn Waterfront Artists Coalition, (Red Hook) Brooklyn, NY
- 2013 **Faces of Figureworks**, Figureworks Gallery, Brooklyn, NY
Show and Tell , Blue Door Gallery, Yonkers NY
Unhinged , Brooklyn Waterfront Artists Coalition, (Red Hook) Brooklyn, NY
Wide Open , Brooklyn Waterfront Artists Coalition, (Red Hook) Brooklyn, NY
- 2012 **GoBrooklynArt**, Brooklyn Museum of Art Open Studio Project, Brooklyn, NY
Coming to Brooklyn. Brooklyn Waterfront Artists Coalition, (Red Hook) Brooklyn, NY
Life Drawing Exhibition, Figureworks Gallery, Brooklyn, NY
- 2011 **Black and White**, Brooklyn Waterfront Artists Coalition, (Red Hook) Brooklyn, NY
Spring Show, Brooklyn Waterfront Artists Coalition, (Red Hook) Brooklyn, NY
- 2010 **10 Years of Figureworks**, Figureworks Gallery, Brooklyn, NY
Lineage, Brooklyn Waterfront Artists Coalition, (Red Hook) Brooklyn, NY
Red Hooked, Brooklyn Waterfront Artists Coalition, (Red Hook) Brooklyn, NY
Nailed, Brooklyn Waterfront Artists Coalition, (Red Hook) Brooklyn, NY
Wide Open, Brooklyn Waterfront Artists Coalition, (Red Hook) Brooklyn
- 2008 **Enamel Guild Northeast, USA**, Fuller Craft Museum, Brockton, MA
- 2005 **To Everything there is a Season**, Enamel Guild Northeast, New York, NY
- 2004 **Juried Exhibition: Vitreous Enamel**, National Enamelist Guild, Rockville Arts Place, Gaithersburg, MD

2000 -2005 **Members' Exhibitions**, Ward Nasse Gallery, New York, NY

HOWARD EISMAN Continued

CURATING

- 2010 **Sightings** , Howard Eisman Workshop, Brooklyn, NY
- 2009 **Promethean Images – The Human Figure in Fired Glass-on-Metal Group Exhibition**, Figureworks Gallery, Brooklyn, NY
- 2005 **Oeuvre d'Eisman** , Ward Nasse Gallery, New York, NY

COMMISSIONS

- 2014 **Tower of Horses** , Private Collection , Quincy Massachusetts
- 2011 **Aquarium**, Hayes and Boone, LLP, 30 Rockefeller Center, NY, NY
- 2011 **Aquatic Players**, Spencer Stewart Firm, Stamford, CT
- 2005 **Rorschach Triptych**, installed above interior fireplace, Private Collection, North Carolina
- 2001 **Triumph of the Sea**, panel mounted outdoors in the collection of Dr. Devitt Elverson, Rockaway, NY

PRESENTATIONS AND WORKSHOPS

- 2010 **Creativity and Emotional Wellness Forum**, St. Francis College, Brooklyn, NY
- 2009 **Creativity**, W.W. Carpenter Foundation Vitreous Enamel Center, Bellevue, KY
- 2008 **Creating Large Vitreous Enamels** (workshop with Harold Belaize) at W.W. Carpenter Foundation Vitreous Enamel Center, Bellevue, KY

PUBLICATIONS

- 2010 **Expressive Art Enameling**, Glass on Metal Magazine
- 2003 **Enhancing Creativity**, Howard Eisman and Zlata Golubitskaya, Glass on Metal Magazine

HOWARD EISMAN Continued

PROFESSIONAL ORGANIZATIONS

Founder & Chairman of the Board, Advocates For Fine Art Enameling, Inc (AFFAE, Inc.)

National Enamelist Guild

Brooklyn Waterfront Artists Coalition

The Enamelist Society

BLOG

Art and Psychology and Stuff

howardeisman.wordpress.com

WEBSITES

www.archenamels.com

www.advocatesforfineartenameling.com